

Automated External Defibrillator (AED)

What is an AED?

An AED is a portable device that sends electric shock waves to the heart to restore normal rhythm in case of a sudden cardiac arrest or if the heart suddenly stops beating.



Locations

Student Services

1st Floor

Student Center

Near Room 408

Cuyler A. Dunbar (CAD)

2nd Floor

Tarlton Complex

1st Floor

Dental Hygiene

Lobby

Catawba Valley Furniture Academy (CVFA)

Break Area

Workforce Solutions Center (WSC)

Main Entrance

Cosmetology

Main Entrance

Main Campus

Near Human Resources & Business Office

Manufacturing Solutions Center (MSC)

Main Entrance Lobby

Main Campus

Administrative Offices Across from
Auditorium

Public Safety Training Complex

Inside Mobile Classroom

Robert E. Paap (PAAP)

Inside Front Door at Main Entry on Top
Level

Executive Center

Main Lobby

Maintenance Facility

Office Area

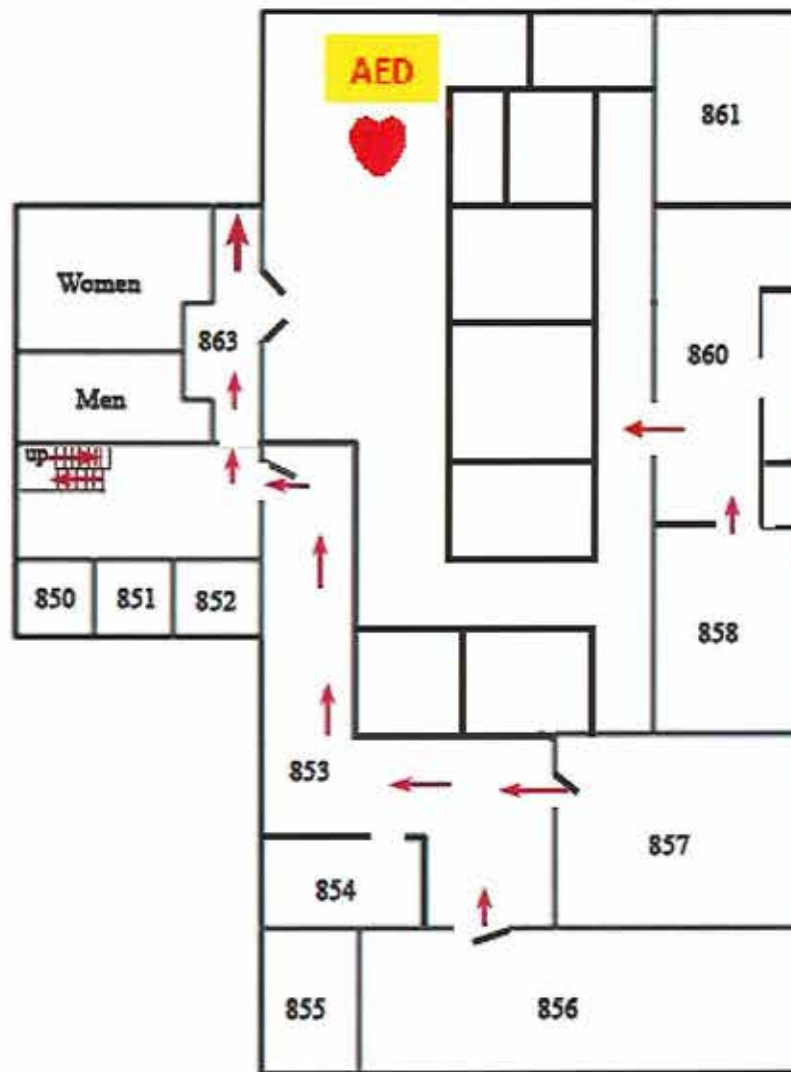
Alexander Applied Technology Center


Near Room 207

Alexander Early College

Lobby Near Reception Desk
(Unit is owned and maintained by
Alexander County School System)

STUDENT SERVICES

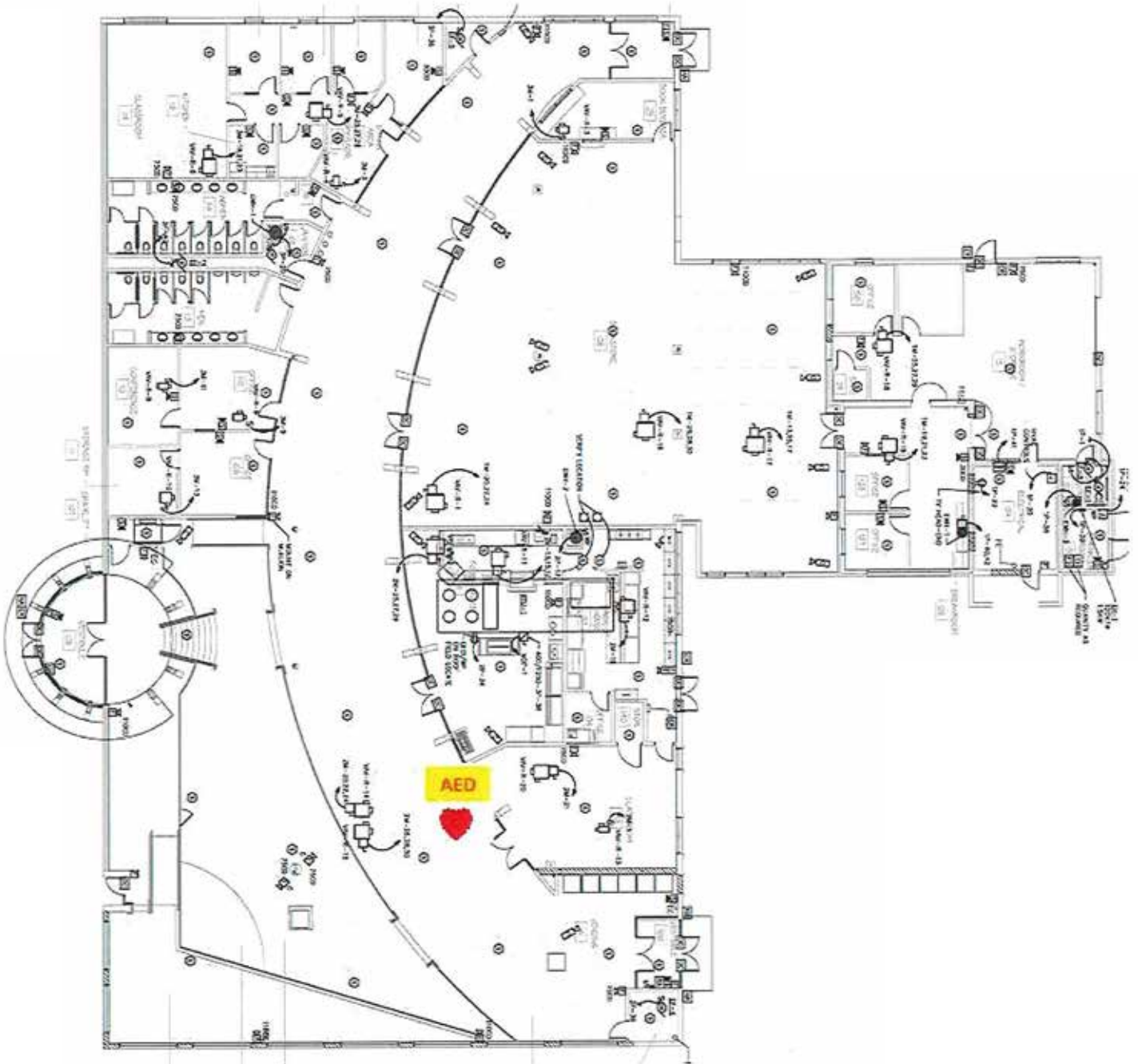


 Emergency Exit



**CATAWBA
VALLEY**
COMMUNITY COLLEGE

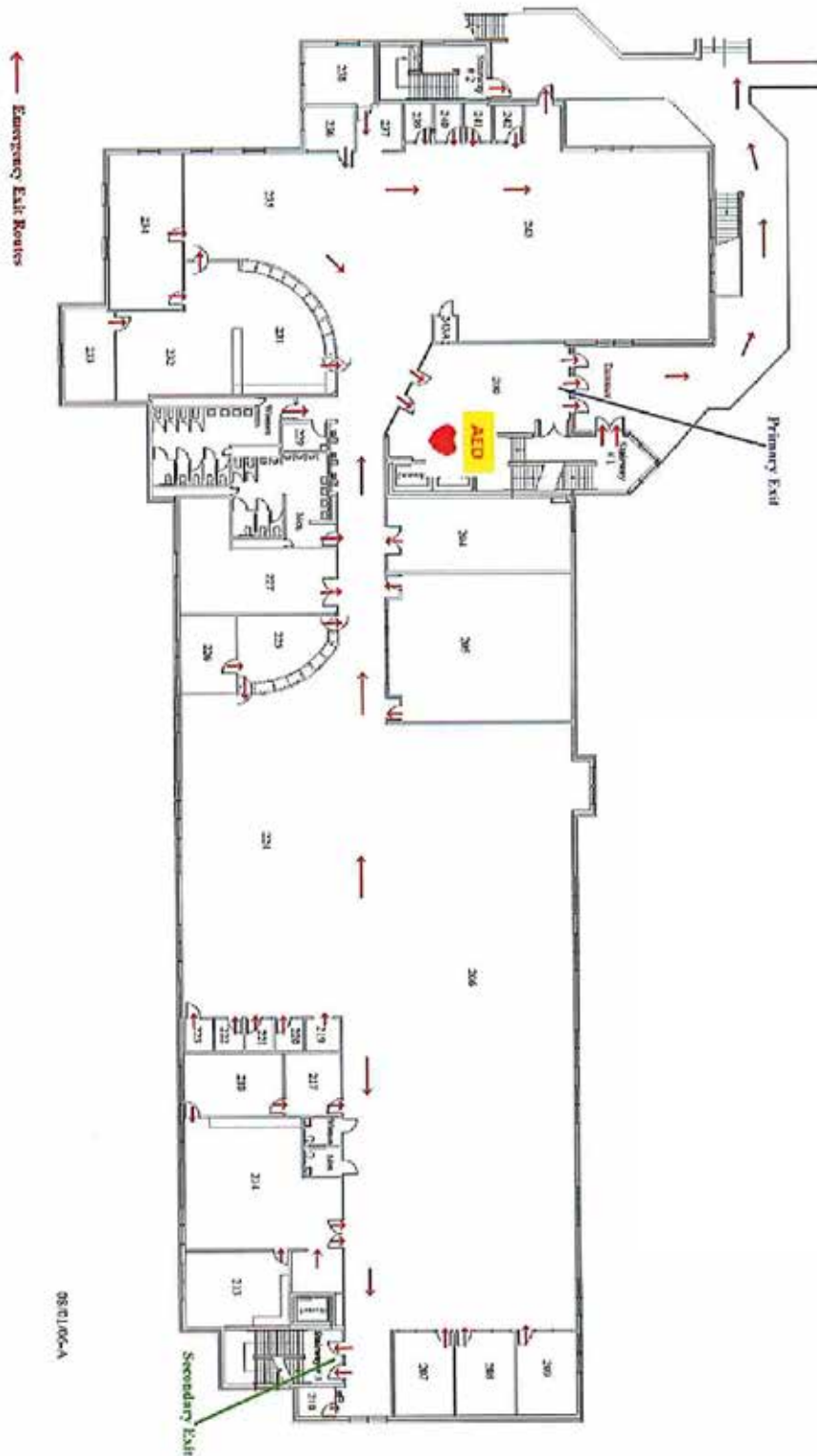
STUDENT CENTER





**CATAWBA
VALLEY**
COMMUNITY COLLEGE

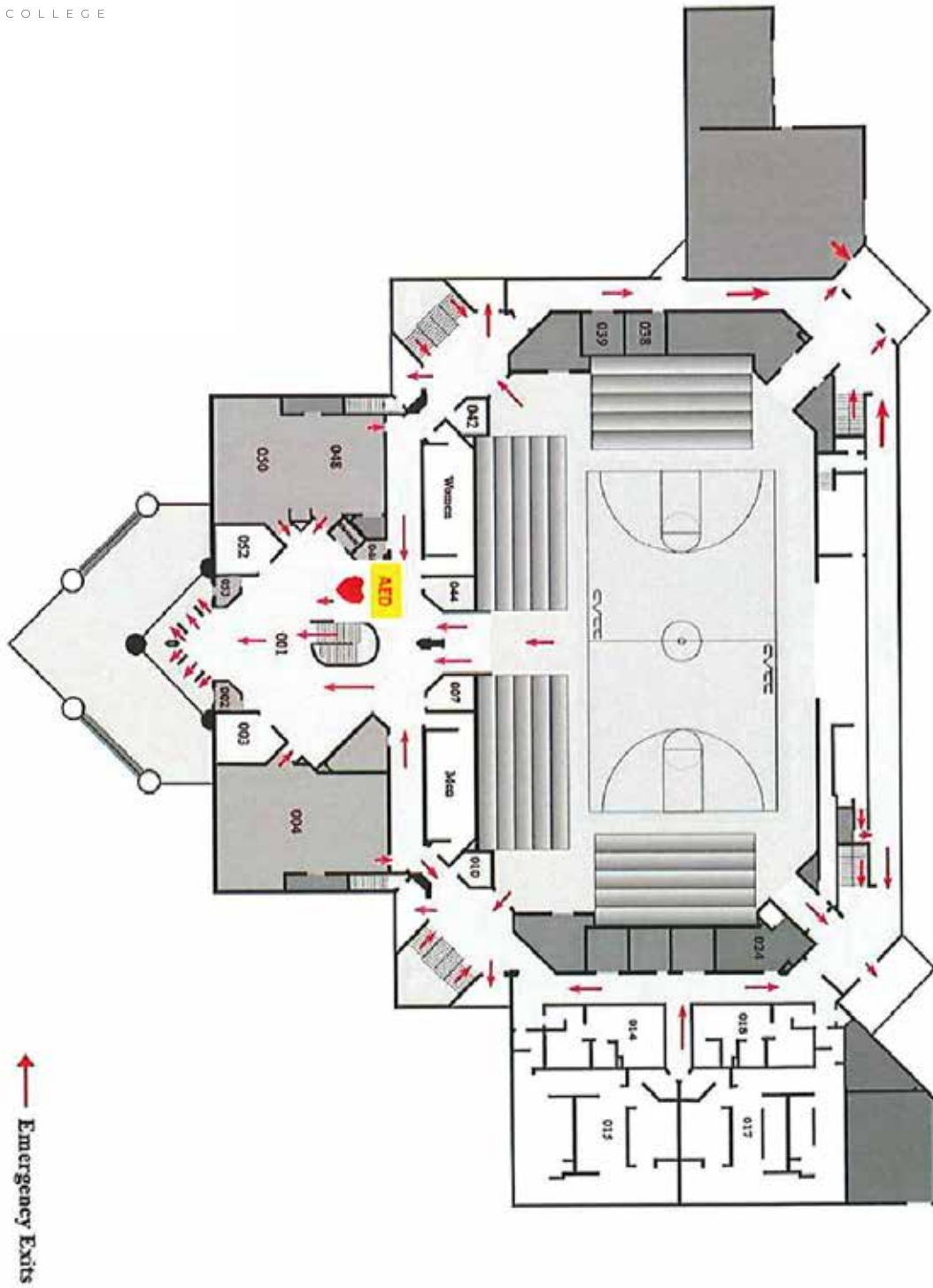
CUYLER A. DUNBAR





**CATAWBA
VALLEY**
COMMUNITY COLLEGE

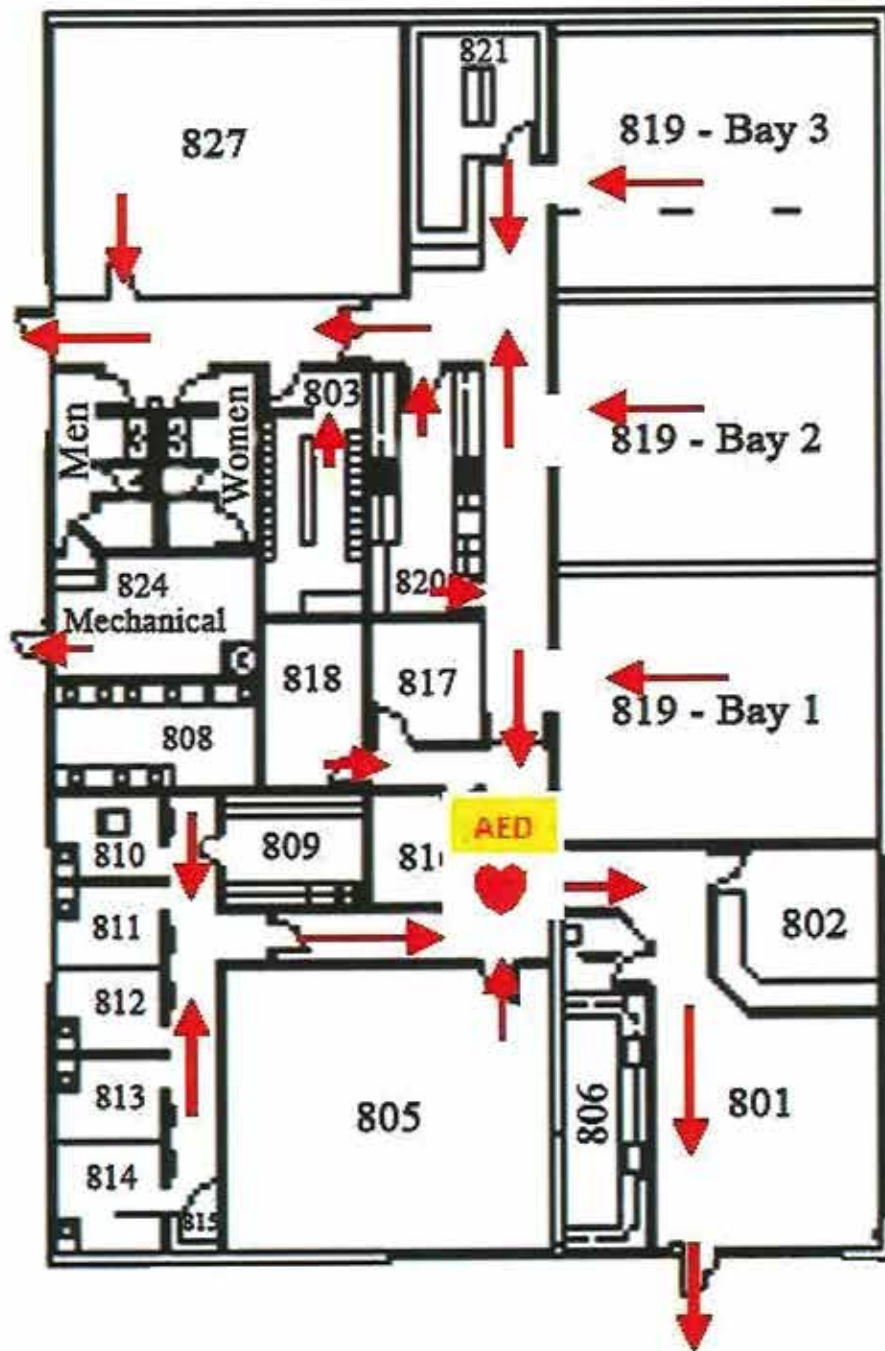
TARLTON COMPLEX





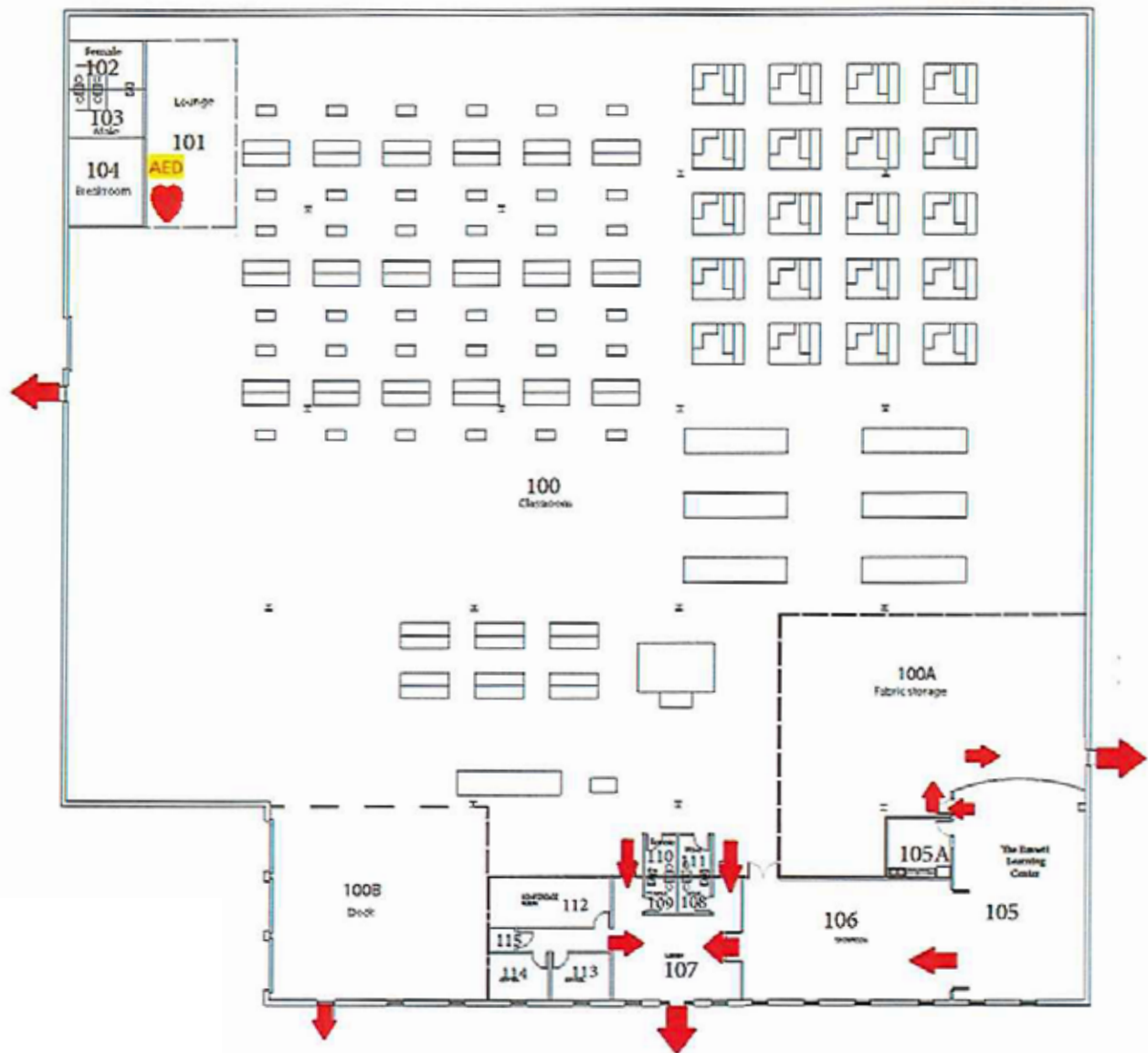
**CATAWBA
VALLEY**
COMMUNITY COLLEGE

DENTAL HYGIENE





CATAWBA VALLEY FURNITURE ACADEMY





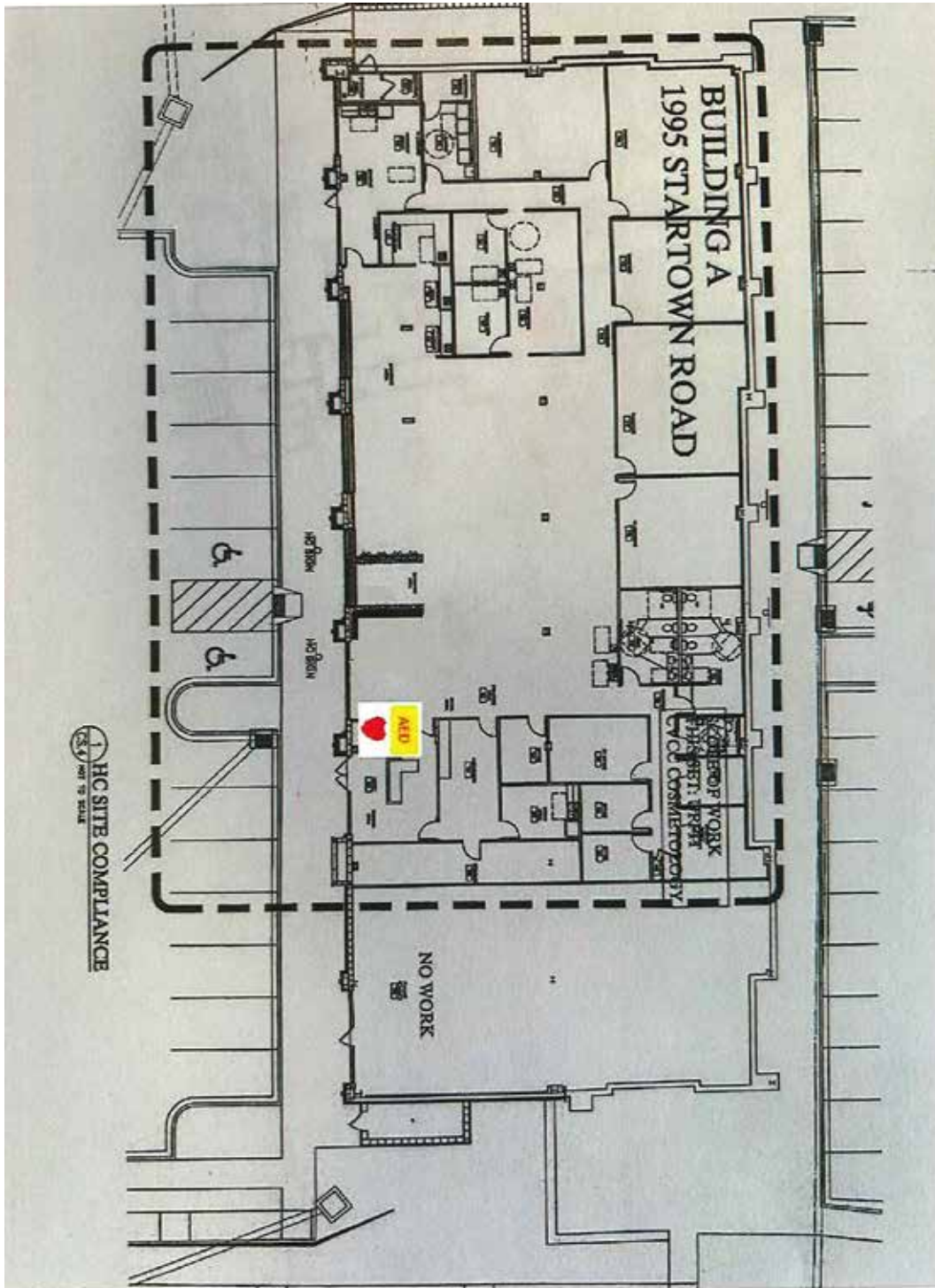
WORKFORCE SOLUTIONS COMPLEX





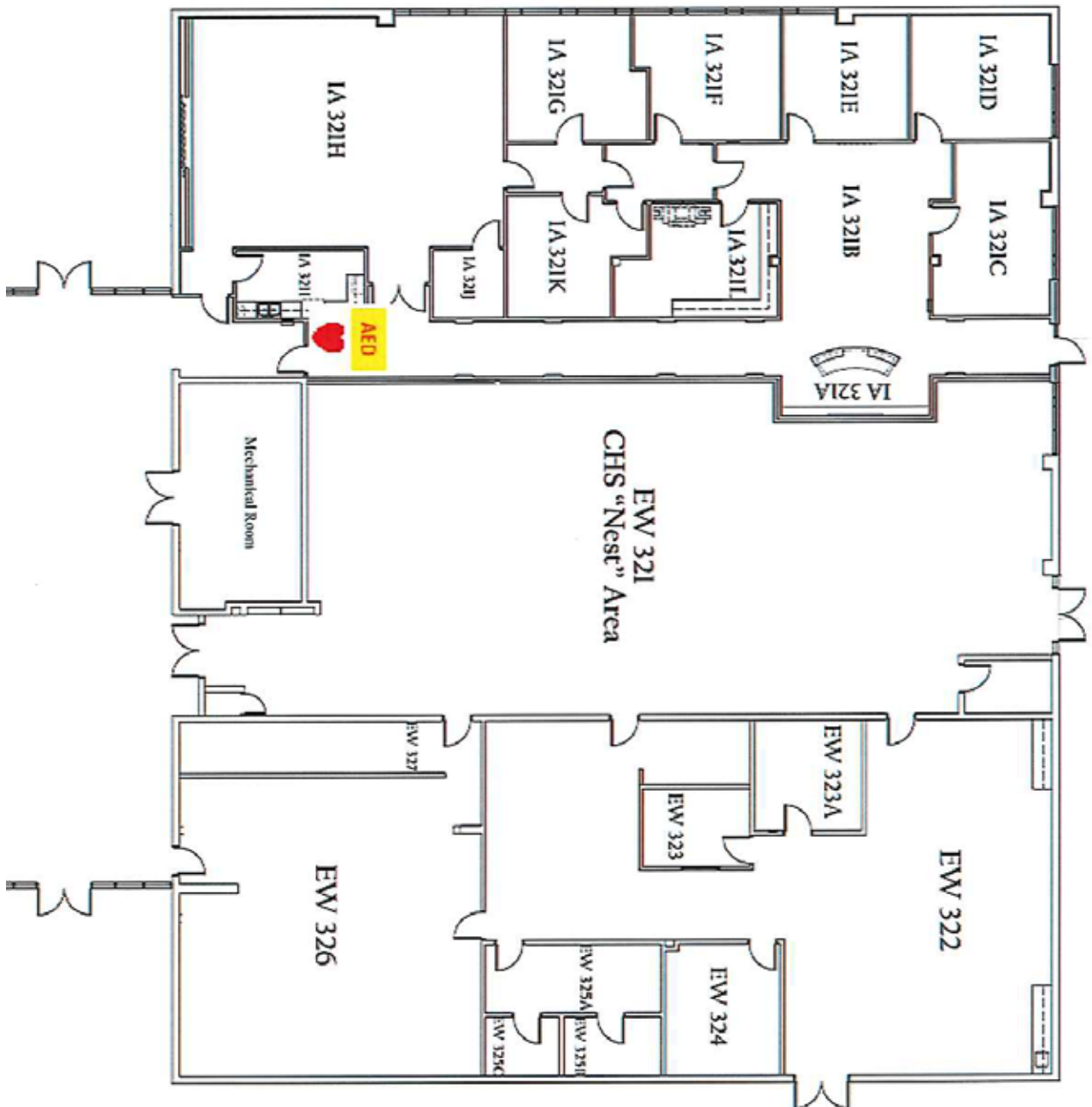
**CATAWBA
VALLEY**
COMMUNITY COLLEGE

COSMETOLOGY



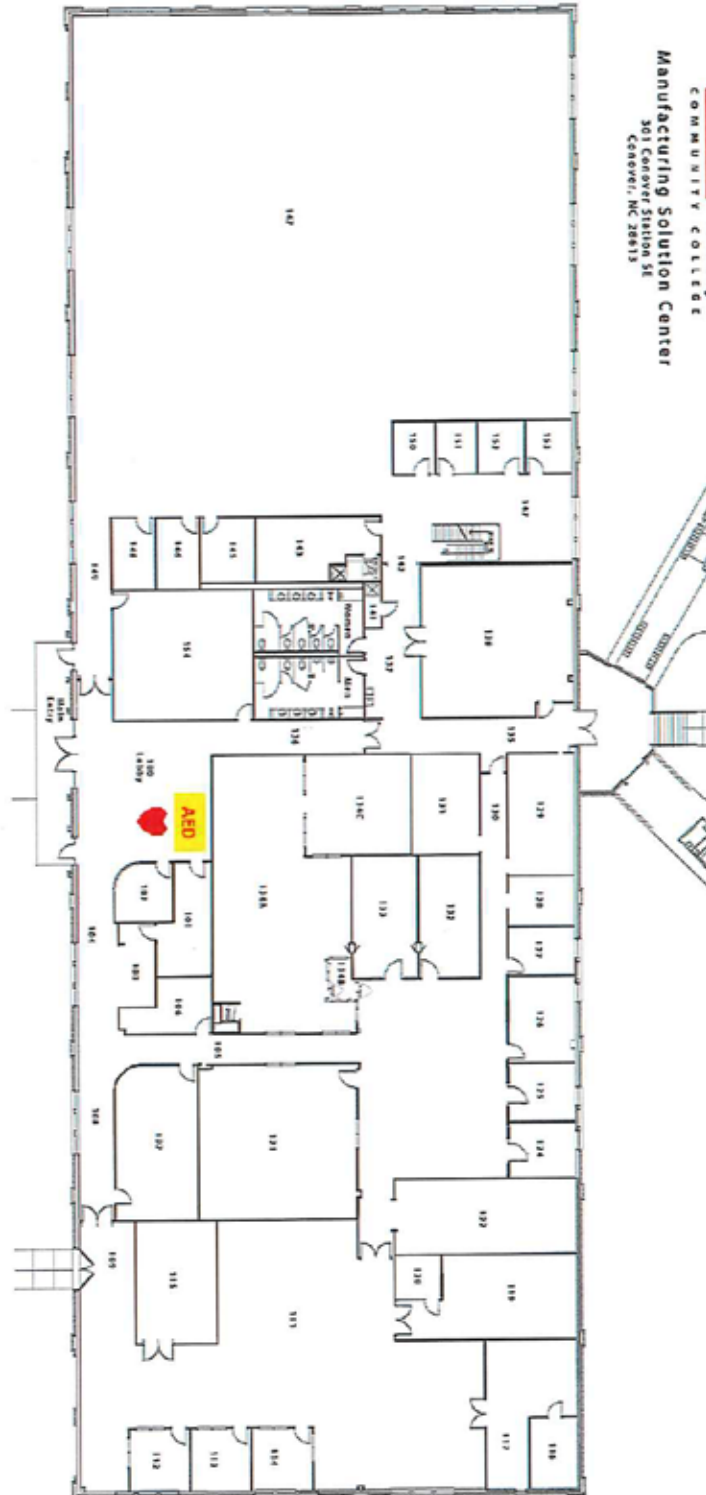


ADMINISTRATIVE OFFICES





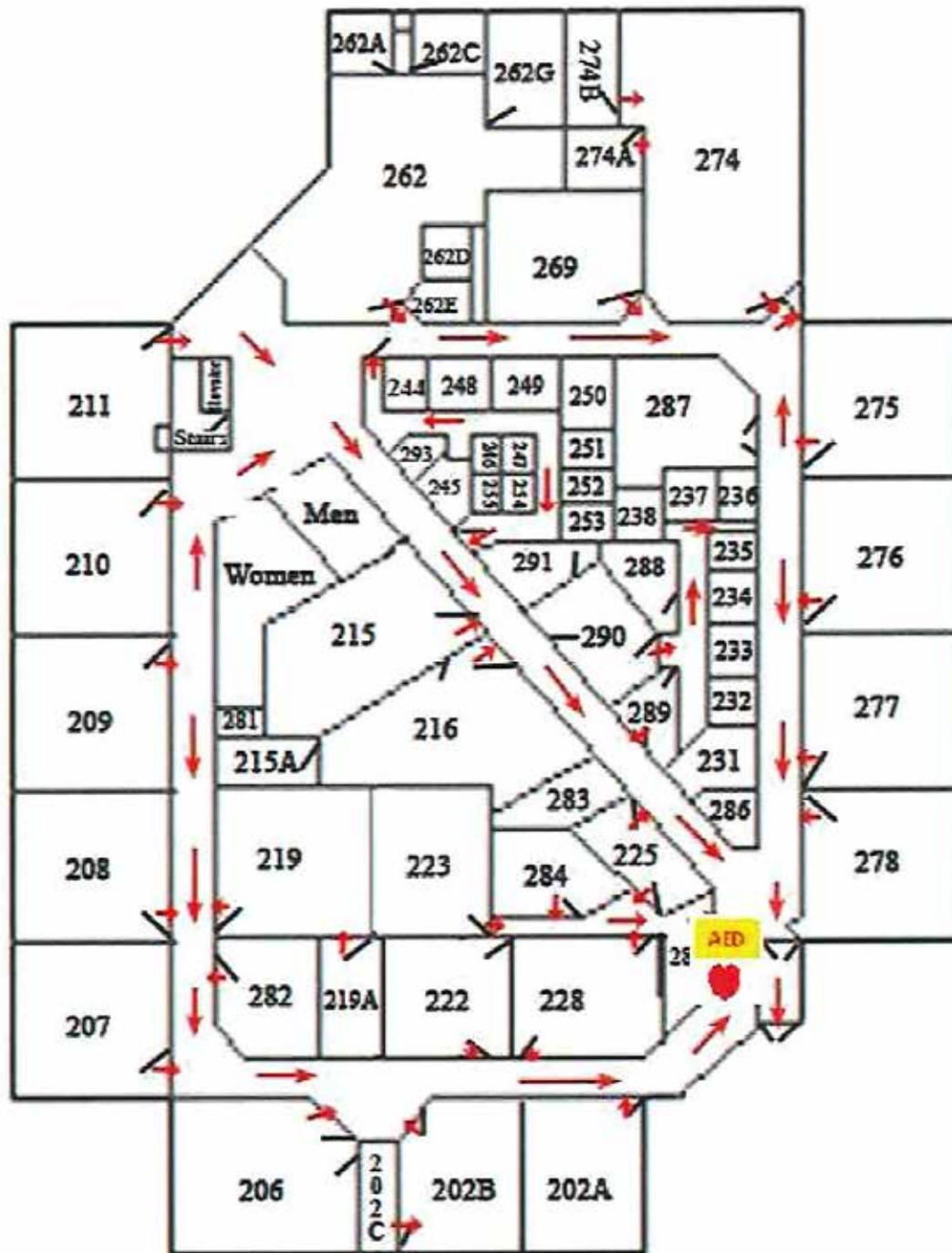
MANUFACTURING SOLUTIONS CENTER





**CATAWBA
VALLEY**
COMMUNITY COLLEGE

ROBERT E. PAAP



← Emergency Exit



**CATAWBA
VALLEY**
COMMUNITY COLLEGE

EXECUTIVE CENTER

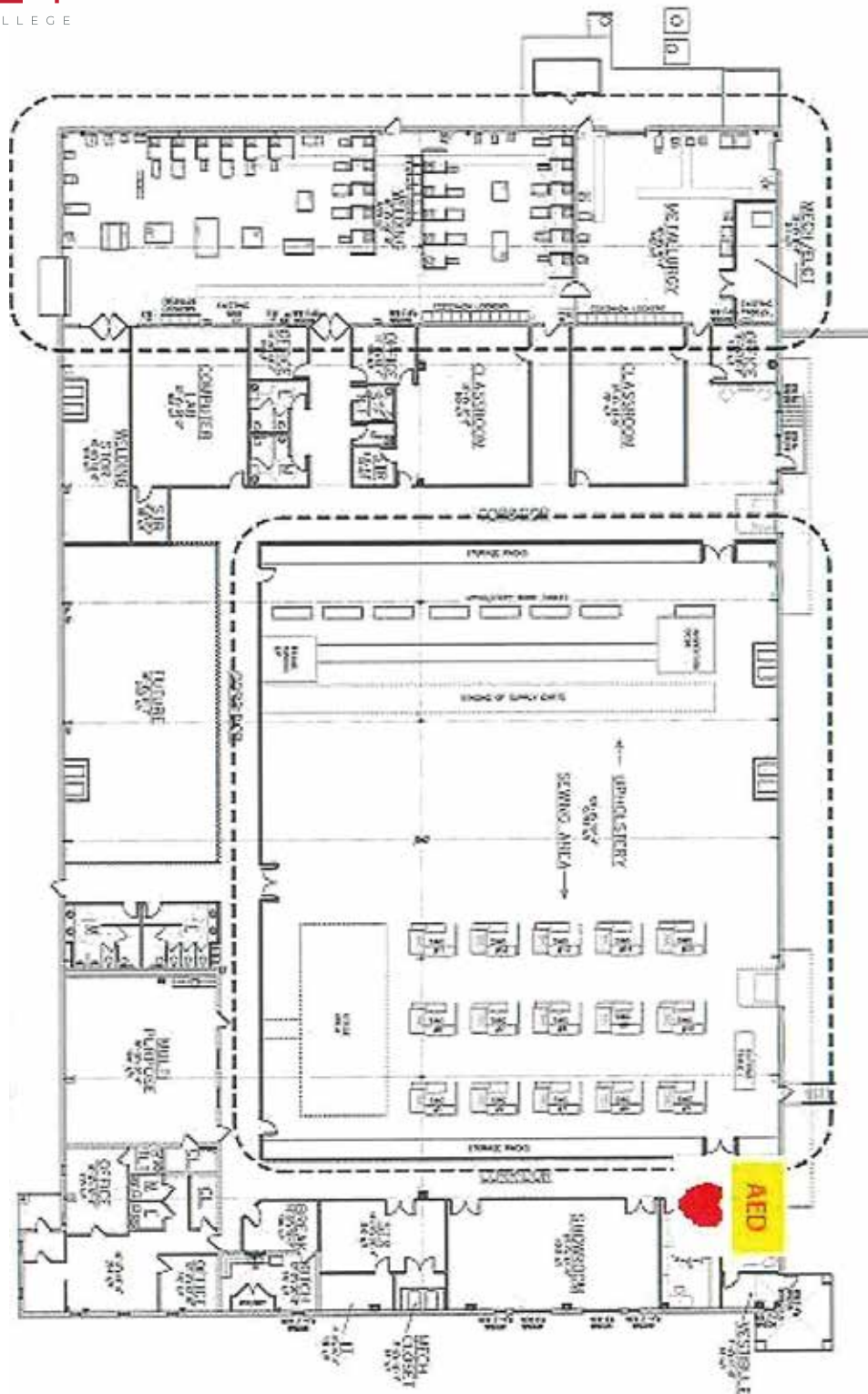




PUBLIC SAFETY TRAINING CENTER



ALEXANDER APPLIED TECHNOLOGY CENTER



ALEXANDER EARLY COLLEGE

→ Emergency Exits

